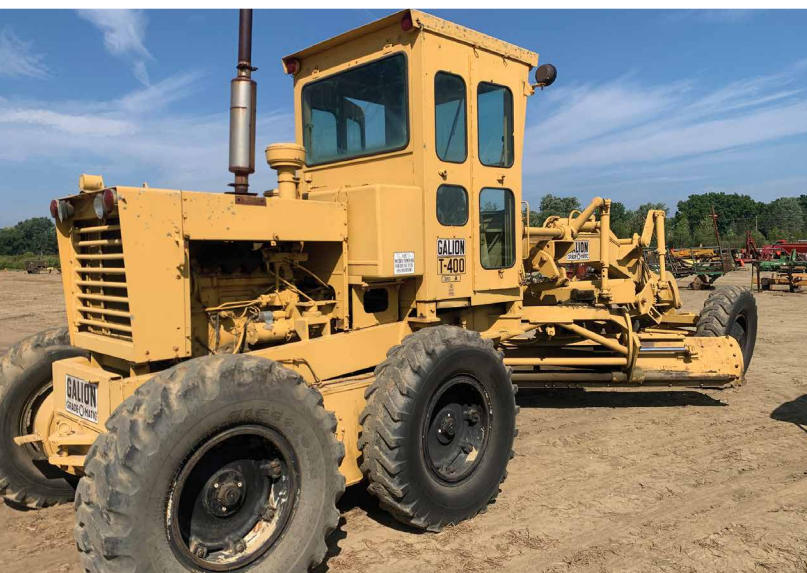


ABSOLUTE AUCTION

FRIDAY, SEPTEMBER 19, 2025, 10:00 AM



NURSERY
EQUIPMENT



LARGE EARLY FALL AUCTION

Loads Of Used &
Excess
Nursery Equipment

3322 SOUTH RIDGE RD.,
PERRY, OH 44081

LIVE ONSITE AUCTION WITH ONLINE BIDDING AVAILABLE

AUCTION HIGHLIGHTS

- Tractors
- Many Trucks
- Farm Equipment
- Trailers
- Planting Equipment
- Much More



Scan for auction
details, including
directions.

Absolute Auction.
All sells to the
highest bidders
on location.

www.kikoauctions.com | 800.533.5456

Information is believed to be
accurate but not guaranteed.
KIKO Auctioneers



TRACTORS, EQUIPMENT

(2) Skat Track 3200 loaders; (2) Case 265 offsets; (2) John Deere 20A diesel articulation tractors; Ford 5000 with side boom mower; Kubota B2620 HST; Kubota B2320 HST; (3) Kubota L2500 tractors; Case 656 high clearance; Gallion T-400 series A grader; Massey Ferguson 135 gas; John Deere 4620 diesel; Ford 1710 offset high clearance diesel; Buckeye 6WD diesel tile trencher with reel cart; Vibromax W605PD vibratory roller; Wood RM59 3pt mower; JD 8300 drill; (2) IH grain drills; (6) QT tree grabbers; (7) small track dump carts; John Deere 220 centerfold disc; 3pt Int. disc; Frontier RT 1308 3pt tiller with rolling basket; several 2 and 4 row mechanical transplanter; (2) Hiller planters; JD and Taylorway 3-shank subsoilers; JD 2 and 4 btm two-way plows; Bouldin Lawson 11303 pot filler; Cram-a-lot 72DH compactor; (2) large hard hose irrigation reels; (4) smaller Ag Rain hard hose sprinkler reels; 3pt 7ft blade; 4ft tillers; pull-type dirt grader; Hardee H20160 side mount mower; air flow lime box; NH 329 and NH 680 single-beater spreaders; approx. (9) 3-sided nursery wagons with Kory gears; dozen tree spades, Red Boss and Dutchmans; (5) Egedal bed lifters; (4) Lommers weeders; 3pt discs and tillers; 8 ft offset disc; Brillion 12 ft cultimulcher; (2) John Deere MX7 brush hogs; doz flatbed wagons with Kory gears; GK machine planter; many 14", 20" and 34" wire tree baskets; scrap iron; water pumps; Hotsy pressure washer; ss water tank on trailer & more

TRUCKS, TRAILERS

2008 Ford F550 with steel dump, diesel; 1993 & 1994 Ford 700 diesels with steel flatbeds; GMC Topkick C7500 flatbed; 1998 Ford F700; Ford L9000 tandem-axle dump truck; 1983 Mack truck with alum dump; 1984 and 1990 AMC Military dump trucks, auto trans, 6wd; 1997 Ford F350 box truck for water; International box truck conv to flatbed; 2005 Ford ranger; 2005 and 2009 Nissan pickups; many Grumman, Utilimaster, and other box trucks; 2013 Ford F150; 2001 Ford F150; 1997 Ford F350; tilt bed pintle-hitch trailer; Chevy K2500; (2) golf carts

PREVIEW: THURSDAY, SEPTEMBER 18, 11:00 AM-3:00 PM OR SALE MORNING.

ONSITE TERMS

Driver's license or State ID required to register for bidder number. Cash, Check, Debit Card, Visa, or Master Card accepted. 4% buyer's premium on all sales; 4% waived for cash or check when paid sale day. Information is believed to be accurate but not guaranteed. Multi Par auction process may be used.

ONLINE TERMS

Visa, MasterCard & Wire Transfer accepted. Wire Transfer or Certified Check required on purchases totaling \$3,000 or greater. 10% buyer's premium on all sales. Information is believed to be accurate but not guaranteed. Multi par auction process may be used.

AUCTION BY ORDER OF
Willowbend Nursery LLC



RUSSELL T. (RUSTY) KIKO, JR.
AUCTIONEER/REALTOR
330.495.0923
rustykiko@kikocompany.com



RYAN M. KIKO
AUCTIONEER/REALTOR
330.831.8565
ryankiko@kikocompany.com



REALTORS
AUCTIONEERS
ADVISORS

Information is believed to be
accurate but not guaranteed.
KIKO Auctioneers

